

FOR LEASE



JUSTIN AUSHERMAN

240.578.4220  
JUSTIN@AUSHCO.COM

201 Thomas Johnson Drive Suite 202 | Frederick, MD 21701 | [AUSHCO.COM](http://AUSHCO.COM)



OFFICE BUILDING

# GOVERNORS PLACE

110 THOMAS JOHNSON DRIVE, FREDERICK, MD 21702

# GOVERNORS PLACE

110 THOMAS JOHNSON DRIVE, FREDERICK, MD 21702



## OFFERING SUMMARY

Available SF:	2,183 - 56,000 SF
Lease Rate:	\$13.00 SF/yr (NNN)
Lot Size:	22.43 Acres
Year Built:	1987
Building Size:	114,478 SF
Renovated:	2017
Zoning:	Professional Business (PB)

## PROPERTY OVERVIEW

Governors Place is a Frederick landmark property. Originally built to be the corporate headquarters of a regional bank the building is now being converted and modernized into a convenient and desired multi-tenant office building featuring upgraded and energy efficient lighting, modern finishes, updated way-finding signage and exterior upgrades.

## PROPERTY HIGHLIGHTS

- Flexible suite sizes
- Fresh new renovations
- Excellent visibility
- Maximum contiguous suite - 36,100
- High speed data
- Immediately available



**JUSTIN AUSHERMAN**

240.578.4220  
JUSTIN@AUSHCO.COM

201 Thomas Johnson Drive Suite 202 | Frederick, MD 21701 | [AUSHCO.COM](http://AUSHCO.COM)

# GOVERNORS PLACE

110 THOMAS JOHNSON DRIVE, FREDERICK, MD 21702



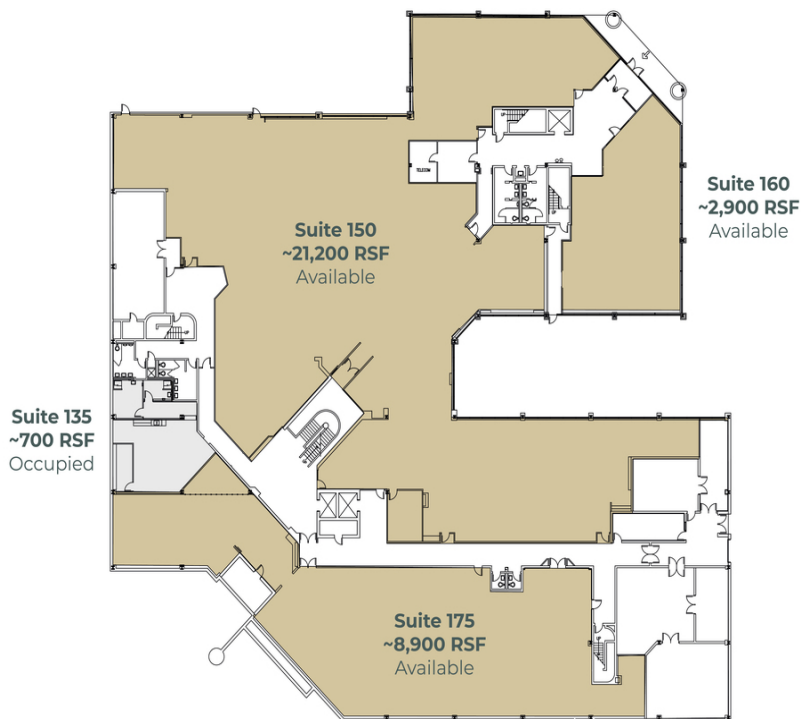
**JUSTIN AUSERMAN**

240.578.4220  
JUSTIN@AUSHCO.COM

201 Thomas Johnson Drive Suite 202 | Frederick, MD 21701 | [AUSHCO.COM](http://AUSHCO.COM)

# GOVERNORS PLACE

110 THOMAS JOHNSON DRIVE, FREDERICK, MD 21702



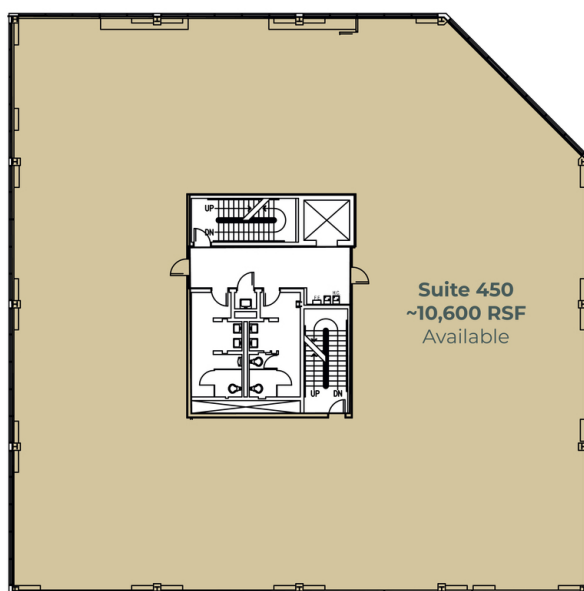
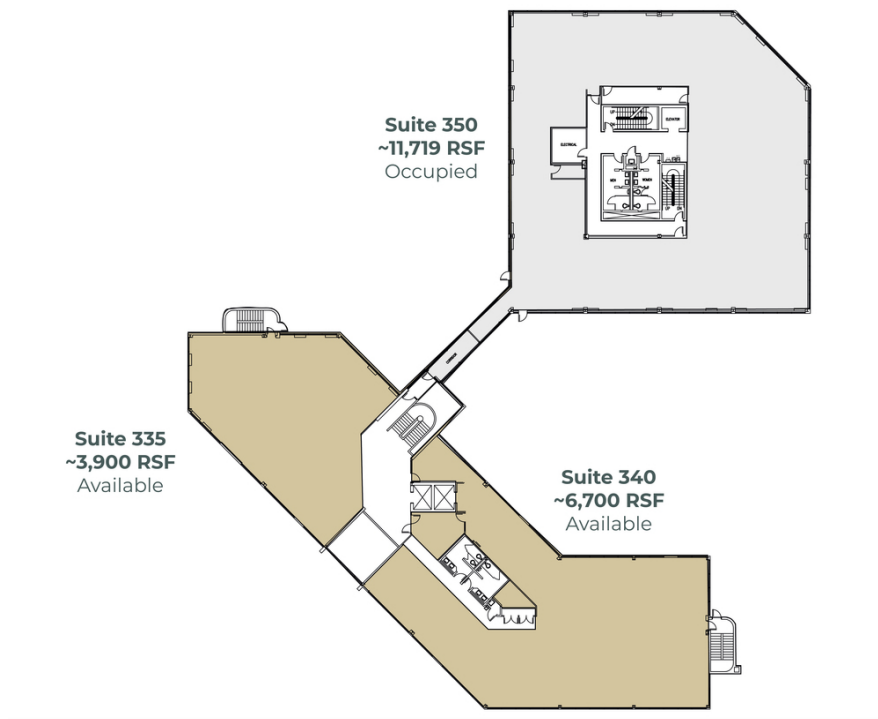
**JUSTIN AUSHERMAN**

240.578.4220  
JUSTIN@AUSHCO.COM

201 Thomas Johnson Drive Suite 202 | Frederick, MD 21701 | [AUSHCO.COM](http://AUSHCO.COM)

# GOVERNORS PLACE

110 THOMAS JOHNSON DRIVE, FREDERICK, MD 21702



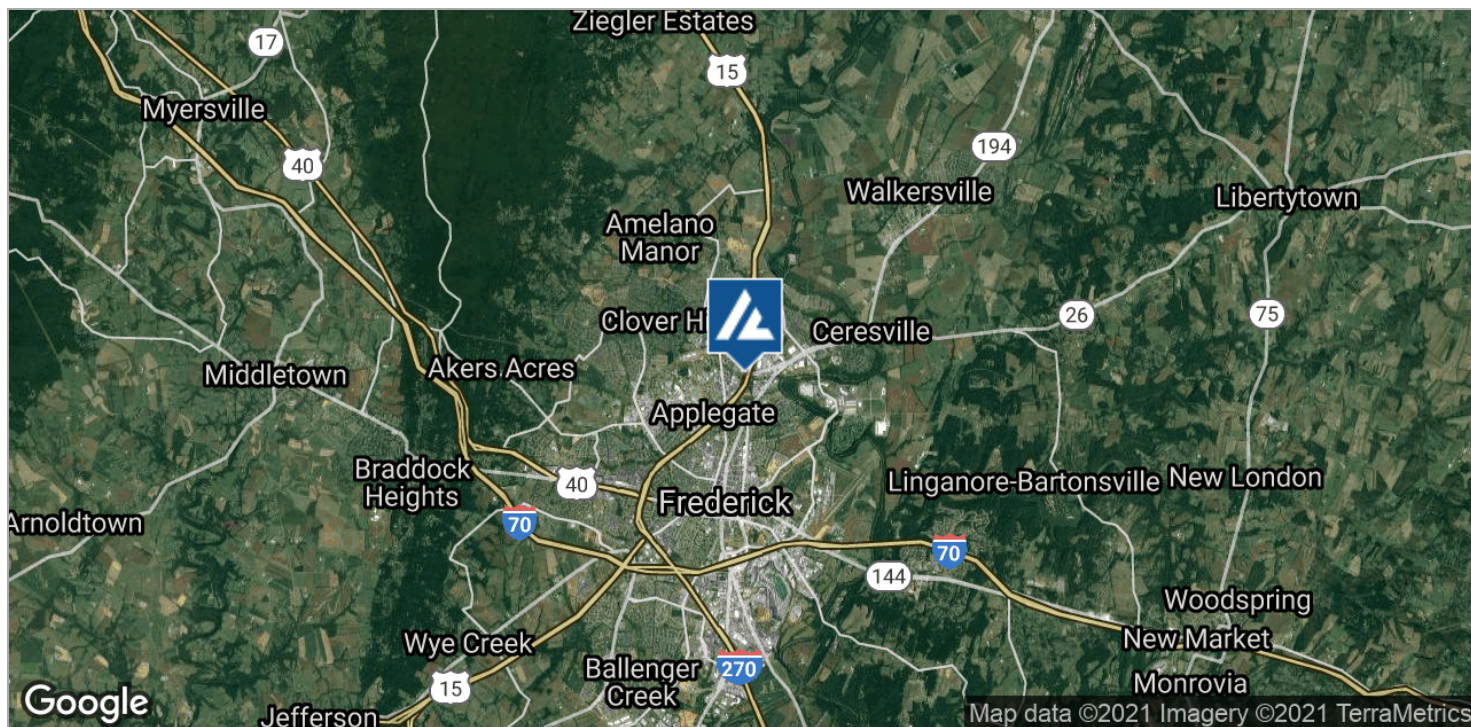
**JUSTIN AUSERMAN**

240.578.4220  
JUSTIN@AUSHCO.COM

201 Thomas Johnson Drive Suite 202 | Frederick, MD 21701 | [AUSHCO.COM](http://AUSHCO.COM)

# GOVERNORS PLACE

110 THOMAS JOHNSON DRIVE, FREDERICK, MD 21702



**JUSTIN AUSHERMAN**

240.578.4220  
JUSTIN@AUSHCO.COM

201 Thomas Johnson Drive Suite 202 | Frederick, MD 21701 | [AUSHCO.COM](http://AUSHCO.COM)