

# KEYPARK CENTER

1050 KEY PARKWAY, FREDERICK, MD 21702



## OFFERING SUMMARY

Available SF:	1,999 SF
Lease Rate:	\$18.00
Lot Size:	1.84 Acres
Year Built:	2007
Building Size:	28,941 SF
Zoning:	Commercial

## PROPERTY OVERVIEW

1050 Key Parkway is a two story medical and professional office building. The property is located adjacent to Rite Aid and across the street from Fitzgerald Auto Mall. Access is convenient with Route 15 North & South being just a few hundred yards up the street. Also within a mile radius there are several amenities including restaurants, dry cleaners, grocery stores and retail shops.

## PROPERTY HIGHLIGHTS

- Conveniently located near Route 15, 70 and 270
- Free surface parking
- Close proximity to food and shopping amenities
- Local property management
- Two stories with elevator



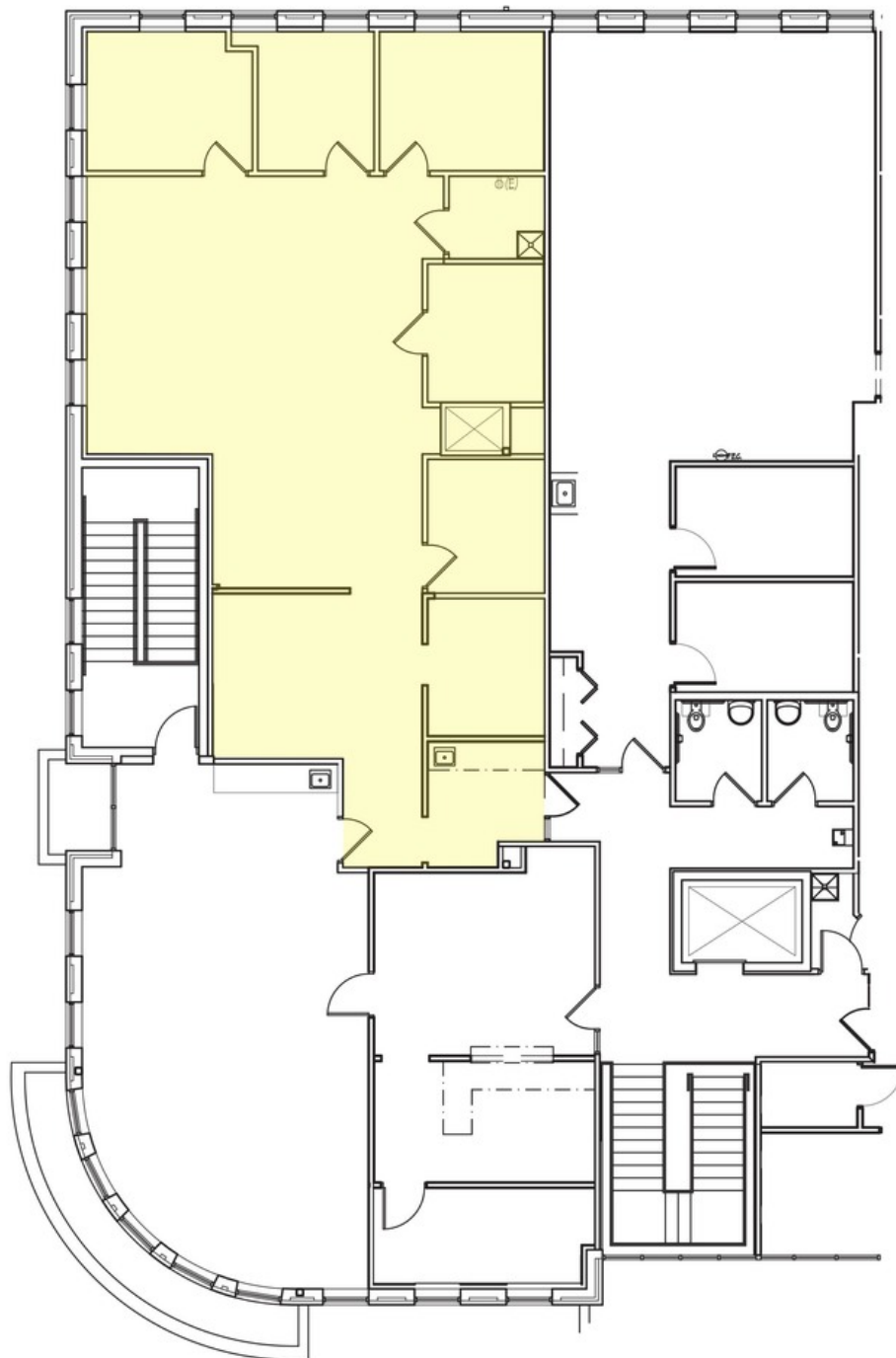
**JUSTIN AUSERMAN**

240.578.4220  
JUSTIN@AUSHCO.COM

201 Thomas Johnson Drive Suite 202 | Frederick, MD 21701 | [AUSHCO.COM](https://www.aushco.com)

# KEYPARK CENTER

1050 KEY PARKWAY, FREDERICK, MD 21702



**JUSTIN AUSERMAN**

240.578.4220  
JUSTIN@AUSHCO.COM

201 Thomas Johnson Drive Suite 202 | Frederick, MD 21701 | [AUSHCO.COM](http://AUSHCO.COM)

# KEYPARK CENTER

1050 KEY PARKWAY, FREDERICK, MD 21702



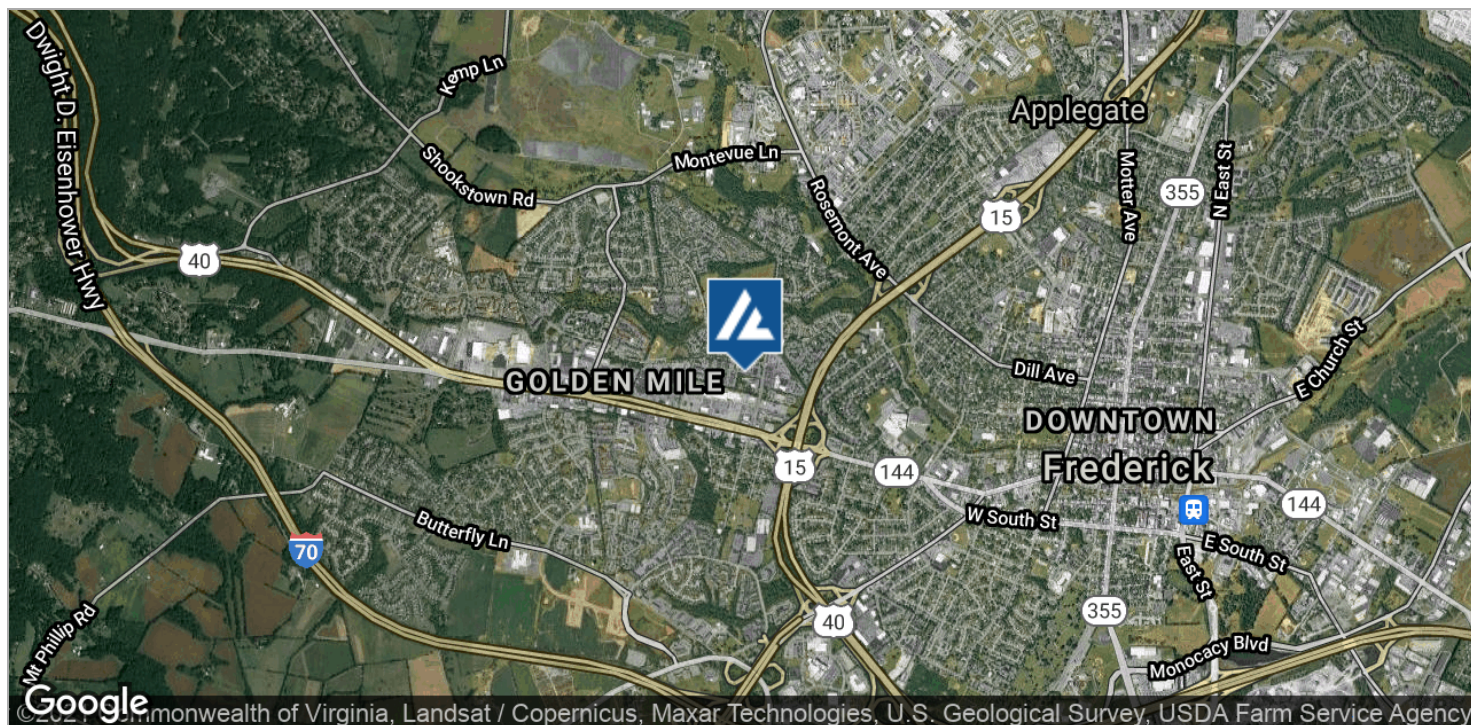
**JUSTIN AUSHERMAN**

240.578.4220  
JUSTIN@AUSHCO.COM

201 Thomas Johnson Drive Suite 202 | Frederick, MD 21701 | [AUSHCO.COM](http://AUSHCO.COM)

# KEYPARK CENTER

1050 KEY PARKWAY, FREDERICK, MD 21702



**JUSTIN AUSHERMAN**

240.578.4220  
JUSTIN@AUSHCO.COM

201 Thomas Johnson Drive Suite 202 | Frederick, MD 21701 | [AUSHCO.COM](http://AUSHCO.COM)